



Spinner

Adjustable Socket &
Volume Management System

Approved HCPCS Coding



L5783 LOWER EXTREMITY



L7406 UPPER EXTREMITY

MEDICARE HAS APPROVED 2 NEW REIMBURSEMENT CODES FOR PROVIDING VOLUME MANAGEMENT SOCKET TECHNOLOGY FOR PATIENT'S REQUIRING A MECHANICAL VOLUME MANAGEMENT SYSTEM.

Simple, Fast Fabrication



MOLD PANEL



MOUNT DUMMY



LAMINATE OR PULL SOCKET

Hidden Force Panels

Eliminate the need to cut panels out of the socket wall.



The BlackFin Spinner

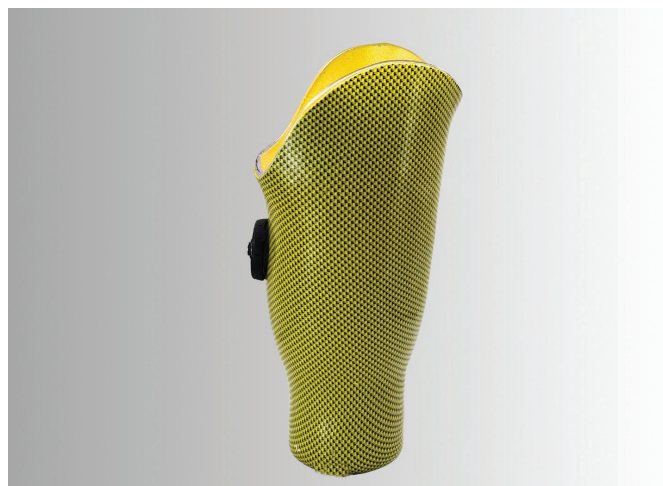
Built for laminated, thermoplastic, and 3D printed sockets.



2 Spinner Versions Available



HIDEX | Features a Hi Dexterity dial permanently connected to drive mechanism for quick adjustments on the fly.



LOPRO | Features a low profile design with a dial that is removable from the drive mechanism.



Easy Installation and Removal



970-440-3244 | www.blackfinmt.com | 1-888-420-0872